

ENCP 7.1

AUTO MAINS FAILURE CONTROL SYSTEM

Discover more at electronil.com/encp_7.1



Image for Illustrations Purposes Only,
Your Actual Product May Vary

Specification Sheet

ELECTRONIL CONTROL PANEL SERIES 7 AMF

ENCP 7.1 Auto Mains Failure Genset Controller



PRODUCT DESCRIPTION

The ENCP 7 Series combines engine, generator and utility controls and monitoring with a single, robust panel for quick access to engine, generator and utility controls, diagnostics, and operating information.

The ENCP 7.1 Automatic Mains Failure Generator Control System is suitable for a wide variety of standby single genset applications.

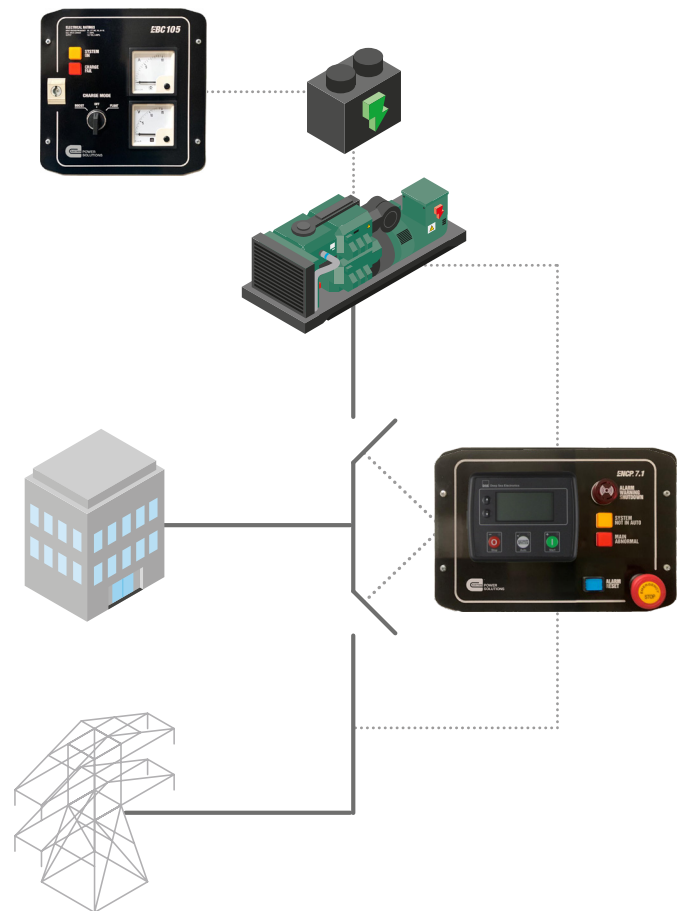
Whilst maintaining functions included within higher end controllers, such as generator or load power monitoring, the ENCP 7.1 is an especially compact controller provide the user with the ultimate size to feature ratio.

Monitoring engine speed, oil pressure, coolant temperature, frequency, voltage, current, power and fuel level, the modules will give comprehensive engine and alternator protection. This will be indicated on the largest back-lit LCD icon display in its class via an array of warning, electrical trip and shutdown alarms.

Electronic J1939 (CAN) and non-electronic (alternator frequency sensing) engine support for diesel, gas and petrol engines all in one variant. With a number of flexible inputs, outputs and protections, the module can be easily adapted to suit a wide range of applications.

Through USB Communication the system can be easily configured using the Configuration Suite PC Software or can be fully configured through the system's front panel editor.

APPLICATION OVERVIEW



PRODUCT KEY FEATURES

- Auto Start and AMF mode in one controller
- J1939-75 support and CAN alarm ignore function
- Alternator frequency & CAN speed sensing in one variant
- Largest back-lit icon display in its class
- Heated display option
- Real time clock provides accurate event logging
- Fully configurable via the fascia or PC using USB communication
- Extremely efficient power save mode
- 3 phase generator sensing
- 3 phase mains (utility) sensing
- Compatible with 600 V ph to ph nominal systems
- Generator/load power monitoring (kW, kVA, kVAh, pf)
- Accumulated power monitoring (kWh, kVAh, kVArh)
- Generator overload protection (kW)
- Generator/load current monitoring and protection
- Fuel and start outputs (configurable when using CAN)
- 4 configurable DC outputs
- 3 configurable analogue/digital inputs
- 4 configurable digital inputs
- Configurable staged loading outputs
- 3 engine maintenance alarms
- Engine speed protection
- Engine hours counter
- Engine pre-heat
- Engine run-time scheduler
- Engine idle control for starting & stopping
- Tier 4 engine instrumentation screens
- Battery voltage monitoring
- Start on low battery voltage
- Configurable remote start input
- 1 alternative configuration
- Comprehensive warning, electrical trip or shutdown protection upon fault condition
- LCD alarm indication
- (50) Event log
- Fuel solenoid pulling circuit
- On-screen line diagram on/off functionality
- (10) Configurable CAN instrumentation
- Water in fuel digital input
- Tank bund alarm digital input
- Generator at rest output
- ECU periodic wake-up for information retrieval
- Back-light power-save mode
- Adjustable delay crank timer
- Pre/post heat functionality
- Overload protection
- Mains/generator A/C system selection
- Output timer for external audible alarm

PRODUCT KEY BENEFITS

- Ultimate size to feature ratio.
- Automatically transfers between mains (utility) and generator.
- Hours counter provides accurate information for monitoring and maintenance periods.
- User-friendly set-up and button layout for ease of use.
- Multiple parameters are monitored simultaneously which are clearly displayed on the largest back-lit icon display in its class.
- The system can be configured to suit a wide range of applications.
- Compatible with a wide range of CAN engines including Tier 4.
- License-free PC software.
- IP65 rating (with optional gasket) offers increased resistance to water ingress.

OPERATOR INTERFACE

- Largest back-lit icon display in its class.
- LED Status Indicators for Modes of Operation.
- Deferent Modes of Operation (Stop/Manual/Auto).
- Alarm Silence/Lamp Test Buttons.
- Manual Start Button (Active in Manual Mode Only).
- External Alarm Horn with Audible/Flash Indicators.
- External Warning Indicator for Not in Auto Mode.
- External Warning indicator for Mains Abnormal.
- External Alarm Reset Pushbutton.
- External Latching Mushroom Head Emergency Stop (Twist to Release).

OPERATOR INTERFACE DIMENSIONS

